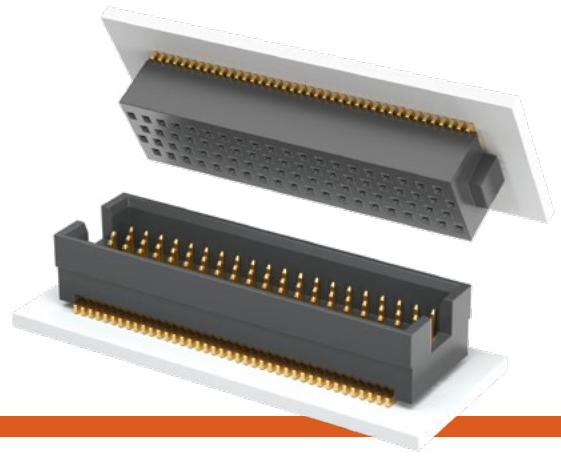


# QUAD ROW SMT TERMINAL & SOCKET

(1.27 mm) .050" PITCH • TOLC/SOLC SERIES



**TOLC**  
Mates:  
SOLC

**SOLC**  
Mates:  
TOLC

**SPECIFICATIONS**

**Insulator Material:**  
Black Liquid Crystal Polymer  
**Contact Material:**  
Phosphor Bronze  
**Plating:**  
Au over 50 μ" (1.27 μm) Ni  
**Current Rating:**  
2.4 A per pin  
(6 adjacent pins powered)  
**Operating Temp Range:**  
-55 °C to +125 °C  
**Insertion Depth (SOLC):**  
(1.68 mm) .066" to  
(3.61 mm) .142" with  
(0.38 mm) .015" wipe  
**Normal Force (SOLC):**  
75 grams (0.74 N) average  
**Max Cycles (SOLC):**  
100+

**PROCESSING**

**Lead-Free Solderable:**  
Yes  
**SMT Lead Coplanarity:**  
(0.10 mm) .004" max (05-35)  
(0.15 mm) .006" max (40-50)\*  
\*(.004" stencil solution  
may be available; contact  
IPG@samtec.com)

**ALSO AVAILABLE**  
MOQ Required

Other sizes  
Other platings

**Note:**  
Some lengths, styles and  
options are non-standard,  
non-returnable.

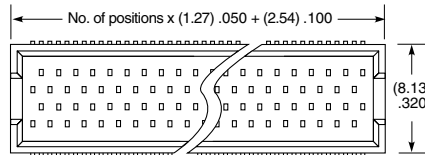
<b>TOLC</b>	<b>1</b>	<b>NO. PINS PER ROW</b>	<b>LEAD STYLE</b>	<b>PLATING OPTION</b>	<b>Q</b>	<b>OTHER OPTION</b>
-------------	----------	-------------------------	-------------------	-----------------------	----------	---------------------

05, 10, 15, 20, 25,  
30, 35, 40, 45, 50  
(Standard Sizes)

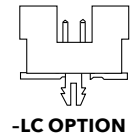
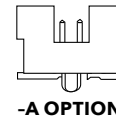
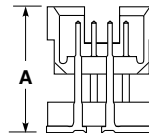
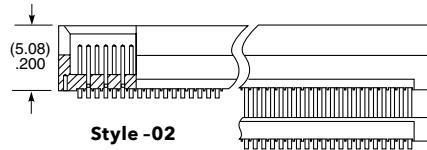
Specify  
LEAD  
STYLE  
from  
chart

**-F**  
= Gold flash  
on contact,  
Gold flash  
on tail  
**-L**  
= 10 μ"  
(0.25 μm)  
Gold on  
contact,  
Gold flash  
on tail

**-A**  
= Alignment Pin  
(N/A with -LC)  
**-LC**  
= Locking Clip  
(N/A with -A)  
(Manual  
placement required)  
**-K**  
= (9.00 mm) .354" DIA  
Polyimide film  
Pick & Place Pad



LEAD STYLE	A	MATED HEIGHT
-02	(5.59) .220	(6.35) .250
-12	(7.24) .285	(8.00) .315
-22	(9.25) .364	(10.00) .394
-32	(11.23) .442	(12.00) .472

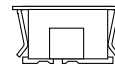
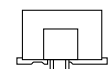
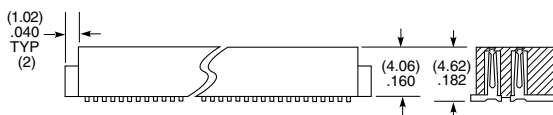
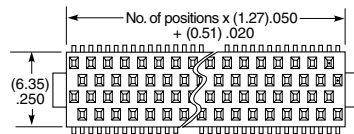


<b>SOLC</b>	<b>1</b>	<b>NO. PINS PER ROW</b>	<b>02</b>	<b>PLATING OPTION</b>	<b>Q</b>	<b>OTHER OPTION</b>
-------------	----------	-------------------------	-----------	-----------------------	----------	---------------------

05, 10, 15, 20, 25,  
30, 35, 40, 45, 50  
(Standard Sizes)

**-F**  
= Gold flash  
on contact,  
Gold flash  
on tail  
**-L**  
= 10 μ"  
(0.25 μm)  
Gold on contact,  
Gold flash  
on tail

**-A**  
= Alignment Pin  
(N/A with -LC)  
**-LC**  
= Locking Clip  
(N/A with -A)  
(Manual  
placement required)  
**-K**  
= (7.00 mm) .276" DIA  
Polyimide film  
Pick & Place Pad  
**-P**  
= Pick & Place Pad  
**-TR**  
= Tape & Reel  
**-FR**  
= Full Reel Tape & Reel  
(must order max.  
quantity per reel;  
contact Samtec for  
quantity breaks)



# Mouser Electronics

Authorized Distributor

Click to View Pricing, Inventory, Delivery & Lifecycle Information:

## Samtec:

[SOLC-140-02-S-Q-A](#) [SOLC-115-02-L-Q-A](#) [SOLC-125-02-S-Q-LC](#) [SOLC-115-02-L-Q-A-K-TR](#) [SOLC-130-02-L-Q-LC](#)  
[SOLC-110-02-L-Q-A](#) [SOLC-115-02-S-Q-A](#) [SOLC-130-02-L-Q-A](#) [SOLC-110-02-S-Q-A](#) [SOLC-120-02-S-Q-A](#) [SOLC-](#)  
[150-02-L-Q-LC](#) [SOLC-130-02-F-Q-LC](#) [SOLC-120-02-F-Q-A](#) [SOLC-125-02-S-Q-A](#) [SOLC-120-02-S-Q-P](#) [SOLC-115-](#)  
[02-S-Q-P-TR](#) [SOLC-120-02-S-Q-A-K-TR](#) [SOLC-115-02-S-Q-P](#) [SOLC-125-02-F-Q-A](#) [SOLC-115-02-S-Q-LC](#) [SOLC-](#)  
[150-02-S-Q-A](#) [SOLC-130-02-S-Q-LC](#) [SOLC-125-02-L-Q-LC](#) [SOLC-125-02-S-Q-A-K-TR](#) [SOLC-150-02-L-Q-A](#) [SOLC-](#)  
[120-02-L-Q-A](#) [SOLC-140-02-L-Q-LC](#) [SOLC-115-02-S-Q-A-P-TR](#) [SOLC-150-02-S-Q-LC](#) [SOLC-120-02-S-Q-LC](#)  
[SOLC-130-02-F-Q-A](#) [SOLC-125-02-L-Q-A](#) [SOLC-150-02-S-Q-A-K-TR](#) [SOLC-120-02-S-Q-LC-P](#) [SOLC-105-02-L-Q-LC](#)  
[SOLC-110-02-F-Q-A](#) [SOLC-120-02-L-Q-LC](#) [SOLC-125-02-F-Q-LC-P-TR](#) [SOLC-125-02-F-Q-P-TR](#) [SOLC-130-02-F-](#)  
[Q-K](#) [SOLC-135-02-L-Q-LC-P](#) [SOLC-115-02-S-Q-TR](#) [SOLC-120-02-L-Q](#) [SOLC-120-02-S-Q](#) [SOLC-120-02-S-Q-A-P](#)  
[SOLC-125-02-S-Q-K](#) [SOLC-125-02-S-Q-LC-P](#) [SOLC-130-02-L-Q-TR](#) [SOLC-135-02-F-Q-LC](#) [SOLC-140-02-F-Q-A-K-](#)  
[TR](#) [SOLC-140-02-L-Q](#) [SOLC-145-02-S-Q-LC](#) [SOLC-145-02-S-Q-P-TR](#) [SOLC-150-02-F-Q-K](#) [SOLC-150-02-F-Q-LC-P](#)  
[SOLC-115-02-F-Q-A](#) [SOLC-120-02-F-Q-LC-P-TR](#) [SOLC-120-02-S-Q-K-TR](#) [SOLC-120-02-S-Q-LC-K](#) [SOLC-120-02-](#)  
[S-Q-LC-P-TR](#) [SOLC-110-02-F-Q-A-K](#) [SOLC-120-02-F-Q-A-K-TR](#) [SOLC-120-02-S-Q-A-P-TR](#) [SOLC-120-02-S-Q-LC-](#)  
[TR](#) [SOLC-125-02-S-Q-P](#) [SOLC-120-02-F-Q-P-TR](#) [SOLC-125-02-F-Q](#) [SOLC-120-02-L-Q-A-K-TR](#) [SOLC-120-02-S-Q-](#)  
[P-TR](#) [SOLC-125-02-L-Q-A-K-TR](#) [SOLC-130-02-F-Q-P](#) [SOLC-130-02-S-Q-A](#) [SOLC-130-02-S-Q-LC-P-TR](#) [SOLC-135-](#)  
[02-L-Q](#) [SOLC-135-02-S-Q-A-P](#) [SOLC-135-02-S-Q-K-TR](#) [SOLC-140-02-S-Q](#) [SOLC-145-02-F-Q-LC](#) [SOLC-150-02-F-](#)  
[Q-A](#) [SOLC-150-02-S-Q-A-TR](#) [SOLC-150-02-S-Q-P](#) [SOLC-150-02-S-Q-TR](#) [SOLC-115-02-L-Q](#) [SOLC-120-02-F-Q-A-P](#)  
[SOLC-125-02-L-Q-P-TR](#) [SOLC-125-02-S-Q](#) [SOLC-130-02-L-Q](#) [SOLC-130-02-S-Q-TR](#) [SOLC-135-02-F-Q](#) [SOLC-](#)  
[135-02-F-Q-A-K](#) [SOLC-135-02-F-Q-A-K-TR](#) [SOLC-140-02-F-Q](#) [SOLC-140-02-S-Q-K-TR](#) [SOLC-140-02-S-Q-LC-P](#)  
[SOLC-150-02-F-Q-A-K-TR](#) [SOLC-120-02-F-Q](#) [SOLC-125-02-L-Q-A-K](#) [SOLC-130-02-F-Q-P-TR](#) [SOLC-130-02-S-Q](#)  
[SOLC-130-02-S-Q-LC-TR](#)