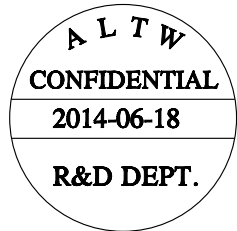
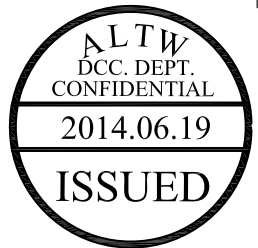
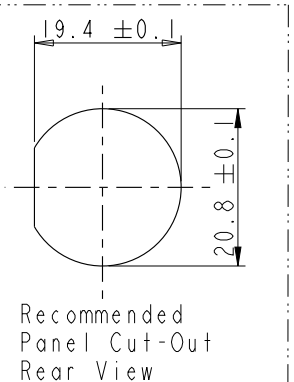
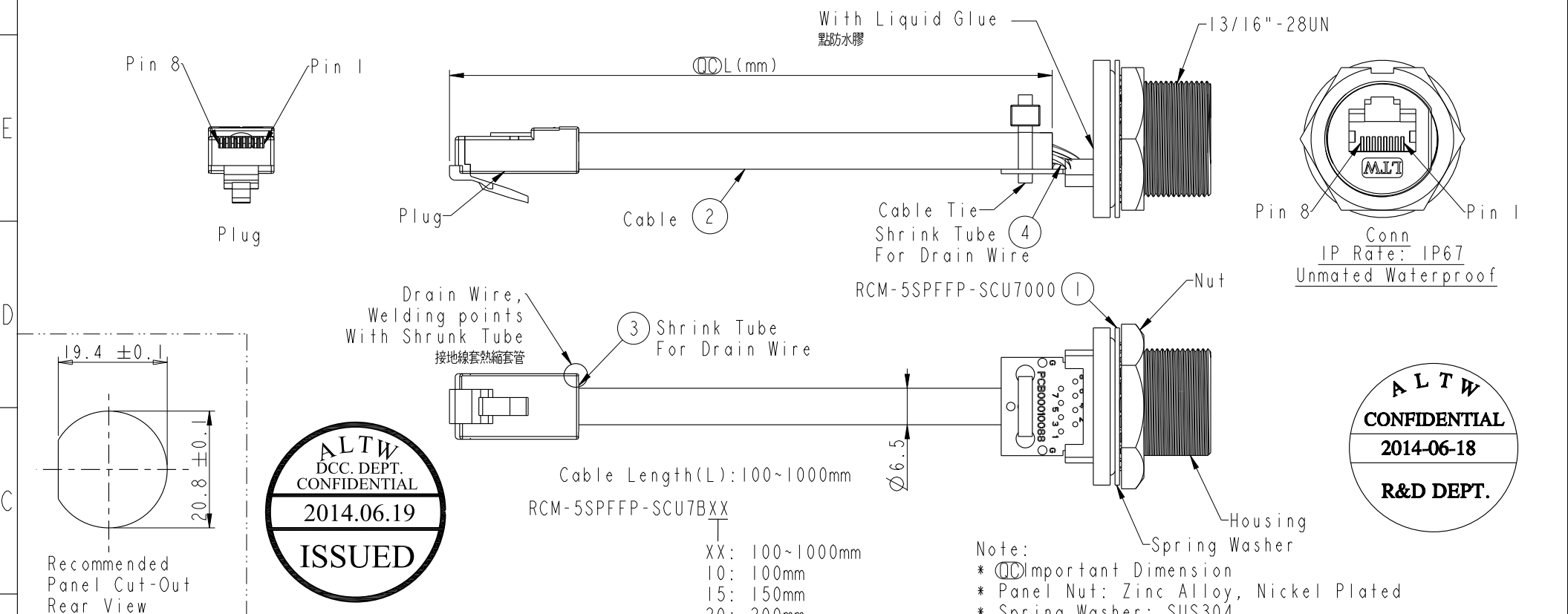


THIS DOCUMENT IS SUBJECT TO CHANGE WITHOUT NOTICE. IT IS CONFIDENTIAL AND A PROPERTY OF Amphenol LTW. DISCLOSURE TO THIRD PARTY HAS TO BE AUTHORIZED BY Amphenol LTW.

REV.	ECN NO.	DATE	SIGN	DESCRIPTION
B	LEN1460068	2014/06/18	Tom	Change Panel Thickness



Cable Length(L): 100~1000mm
 RCM-5SPFFP-SCU7BXX
 XX: 100~1000mm
 10: 100mm
 15: 150mm
 20: 200mm
 |
 95: 950mm
 A0: 1000mm

Cable length	Tolerance
0.0~100 mm	±10 mm
101~300 mm	±15 mm
301~1000 mm	±20 mm

- Note:
- * \varnothing Important Dimension
 - * Panel Nut: Zinc Alloy, Nickel Plated
 - * Spring Washer: SUS304
 - * O-Ring: Silicone, Gray_Black
 - * Housing: Zinc Alloy, Nickel Plated
 - * Use with waterproof cap or dust cap for Panel Thickness Max: 3.0mm
 - * Use without waterproof cap or dust cap for Panel Thickness Max: 4.2mm
 - * Plug: 8P8C, Gold Plated, Shielded
 - * Recommend Force: 8~10kg-cm
 - * Cable: CAT5E FTP 24AWG*4P+My+Drain+ Al/My(UV Resistant), OD=6.5mm, Black

Shield	Drain Wire	地線	Shield
8	Brown	棕	8
7	Brown /White	棕/白	7
6	Green	綠	6
5	Blue/White	藍/白	5
4	Blue	藍	4
3	Green/White	綠/白	3
2	Orange	橘	2
1	Orange/White	橘/白	1
Plug	Wire Color	Conn.2	

Twist 對線

UNIT:mm TOLERANCE .X ±0.25 .XX ±0.1 .XXX ±0.05 ANGLES ±1°	TITLE RJ45,C SIZE,PCB W/CABLE		Amphenol LTW 安費諾亮泰企業股份有限公司		ITEM NO RCM-5SPFFP-SCU7BXX	DRAWN BY Tom	DATE 2014-06-18
	SCALE 1:1	SIZE A4			SHEET 1 OF 1	DWG NO RCM-5SPFFP-SCU7BXX	CHECKED BY Jerry
REV. B	WC-REV. A.4	\varnothing : Inspection item	CUSTOMER ALTW	APPROVED BY Victor	DATE 2014-06-18		

Mouser Electronics

Authorized Distributor

Click to View Pricing, Inventory, Delivery & Lifecycle Information:

[Amphenol:](#)

[RCM-5SPFFP-SCU7B10](#) [RCM5SPFFPSCU7B15](#) [RCM-5SPFFP-SCU7B15](#)